



Universitas Jember
- Tradition of Excellence -

LP2M

Researcher Weeks

14 September 2020

“Securing Research Funding:
Tips and Tricks”

Hanggara Sudrajat

Faculty of Engineering, Universitas Jember



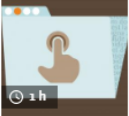
Unlock your research potential

Navigate your research journey with Researcher Academy. Free e-learning modules developed by global experts. Career guidance and advice. Research news on our blog.

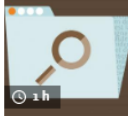
Start learning >




Latest



RESEARCH DATA MANAGEMENT
Make your data accessible - It's Not FAIR! Improving Data Publishing Practices in Research

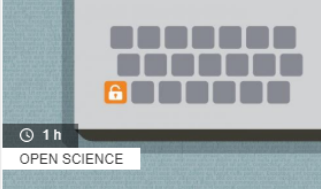


RESEARCH DATA MANAGEMENT
Make your data findable - It's Not FAIR! Improving Data Publishing Practices in Research




SOCIAL IMPACT
How to integrate sex, gender, and intersectional analysis into research


Start learning



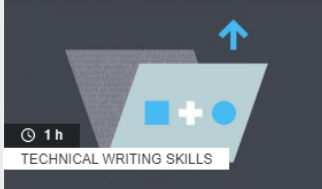
OPEN SCIENCE
How to leverage open hardware to improve your research
Why is Open Source Hardware important? Did you know it offers fundamental advantages to the research community?



RESEARCH DATA MANAGEMENT
Make your data accessible - It's Not FAIR! Improving Data Publishing Practices in Research
Findable, Accessible, Interoperable and Re-usable - The FAIR Data Principles. Likely you've heard about FAIR, but do you know how it can support you and



SOCIAL IMPACT
How to build empathy in research
In this webinar, our experts focus on three tools for building empathy in research: interviewing, journey mapping and Photovoice. Also, they discuss ways of adapting these tools



TECHNICAL WRITING SKILLS
How to write case reports
Case reports provide valuable information by throwing light on rare and unusual clinical presentations, symptoms or diseases.

Feedback

Feedback



Some of our partners



Content



- ❑ Securing grant funding
 - ❑ Case studies - personal experiences
 - Funding for Postdoctoral Fellow (PDF)
 - Funding for Principal Investigator (PI)
 - Funding from private sector / company
- Funding from international research center
 - Accessing national-level funding from other countries

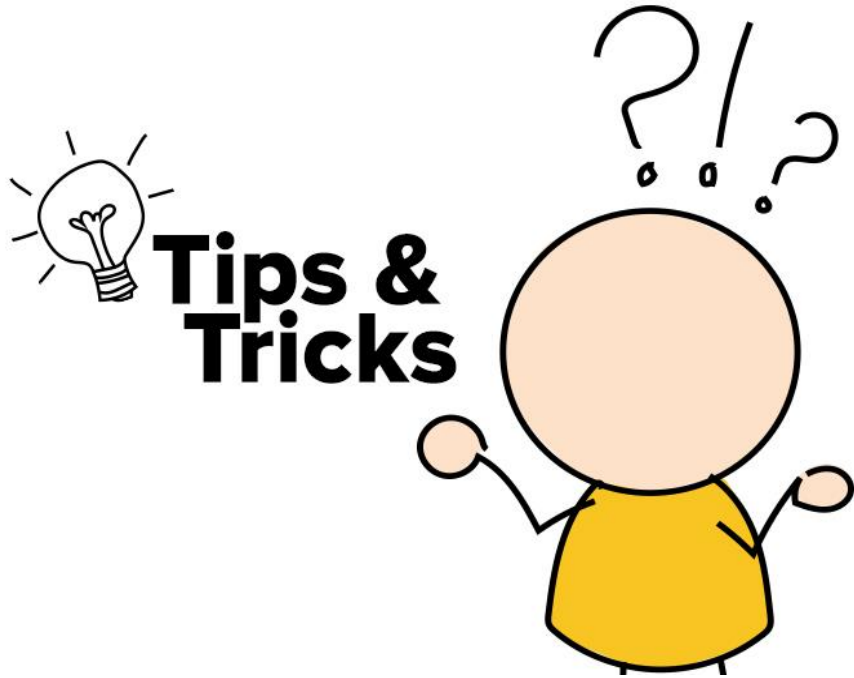
If we have neither good funding nor excellent research facilities

Content



- ❑ **Securing grant funding**
- ❑ Case studies - personal experiences
 - Funding for Postdoctoral Fellow (PDF)
 - Funding for Principal Investigator (PI)
 - Funding from private sector / company
 - Funding from international research center
 - Accessing national-level funding from other countries

Tips and tricks – *my personal thoughts*

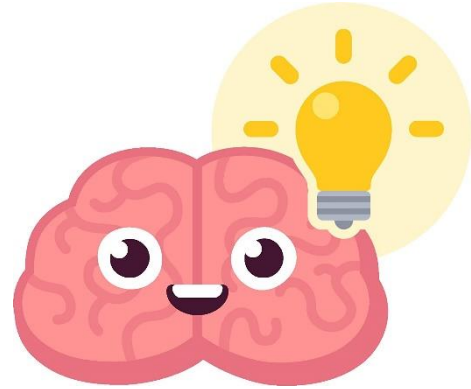


- Although no universal tips and tricks, some of them seem to work in many cases
- Even if we have a little money and poor research facilities, chances can still be with us to perform an impactful research (**how?**)

Funding – *my personal thoughts*



“Research is a chemical reaction”



Reactant
(**idea**)

+

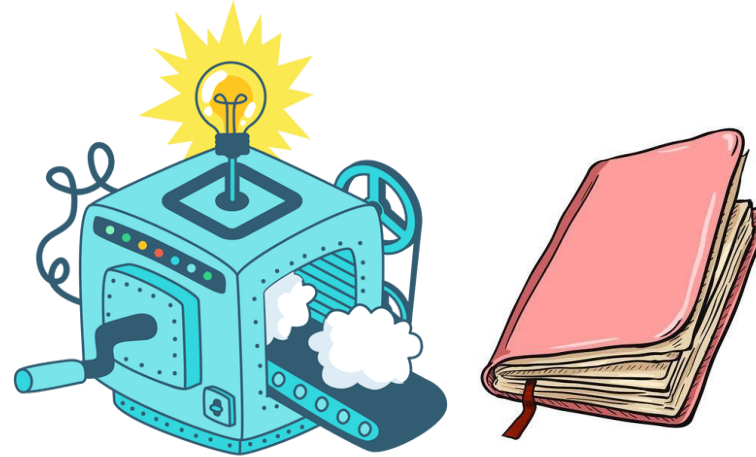


Reactant
(**funding**)

Conversion
(**research**)



Catalyst
(**Lab facilities,
students, etc.**)



Products
(**paper, patent, device, etc.**)

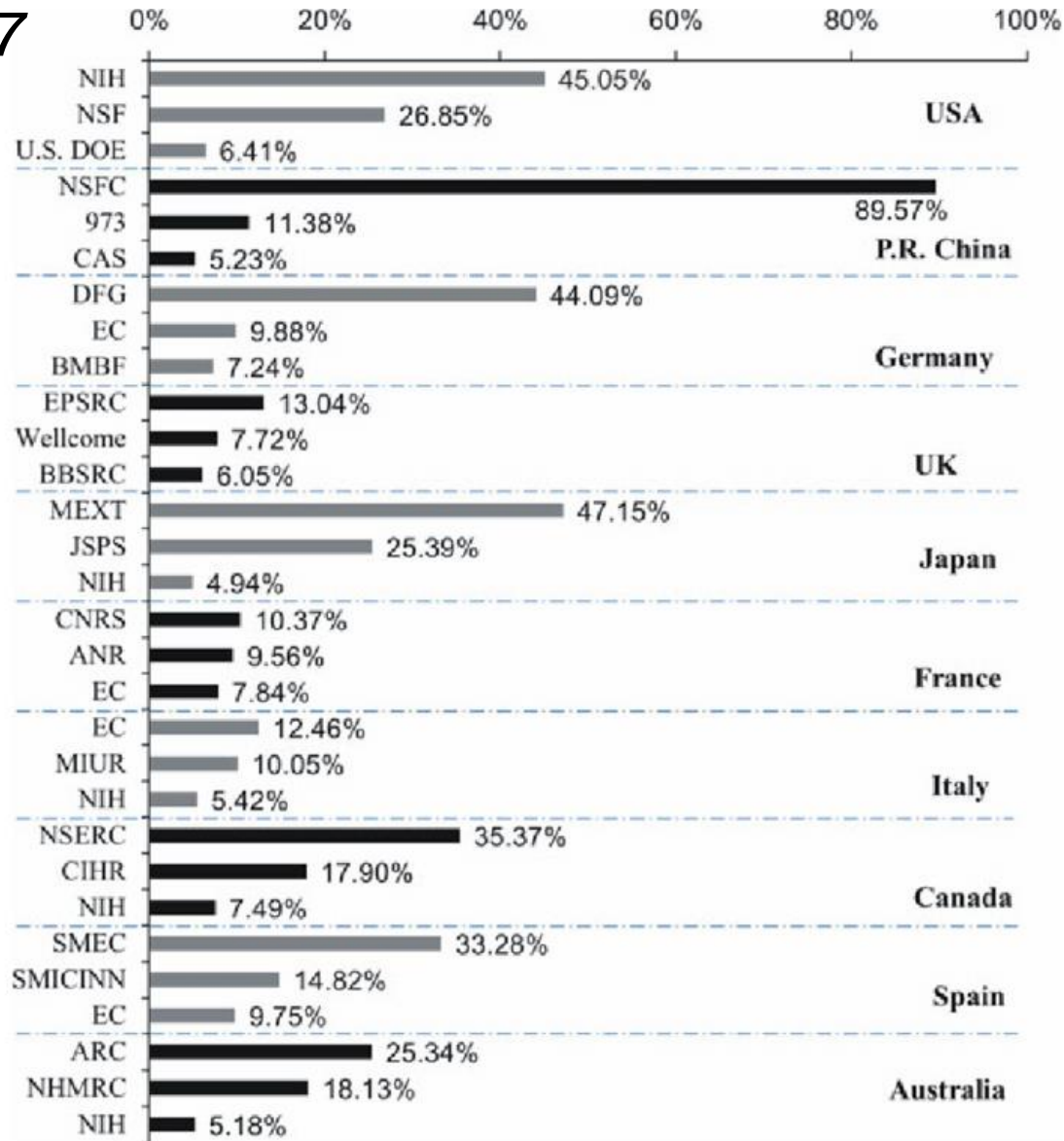
Concerns:

- Conversion efficiency?
- Product quality-quantity?
- Catalyst?

Funding – country comparison



2017



National Natural Science Foundation of China



National Institutes of Health



Deutsche Forschungsgemeinschaft



MEXT

MINISTRY OF EDUCATION, CULTURE, SPORTS, SCIENCE AND TECHNOLOGY-JAPAN



Securing grant funding



Key features of a fundable (and publishable)

research:

- Urgent-Important**
- Relevant**
- Novel-Pioneering**

- *These features must be present and clearly expressed in our proposal -*

Securing grant funding



Funding agencies for global research:

- Bioversity International Fellowship Program
- Bill and Melinda Gates Foundation
- Burroughs Welcome Fund
- The World Academy of Sciences
- Fulbright Scholar Program
- German Academic Exchange Service
- Humboldt Foundation
- etc.

Securing grant funding



- ❑ Most prestigious agencies are swamped with high-quality proposals, far beyond their capacity to fund
- ❑ How to “Stand Out in a Crowd”?
Several items should be considered when applying for a grant →

Securing grant funding



What to consider

- Ideas
- Writing the grant
- Collaborators
- Application process
- Responding the reviews

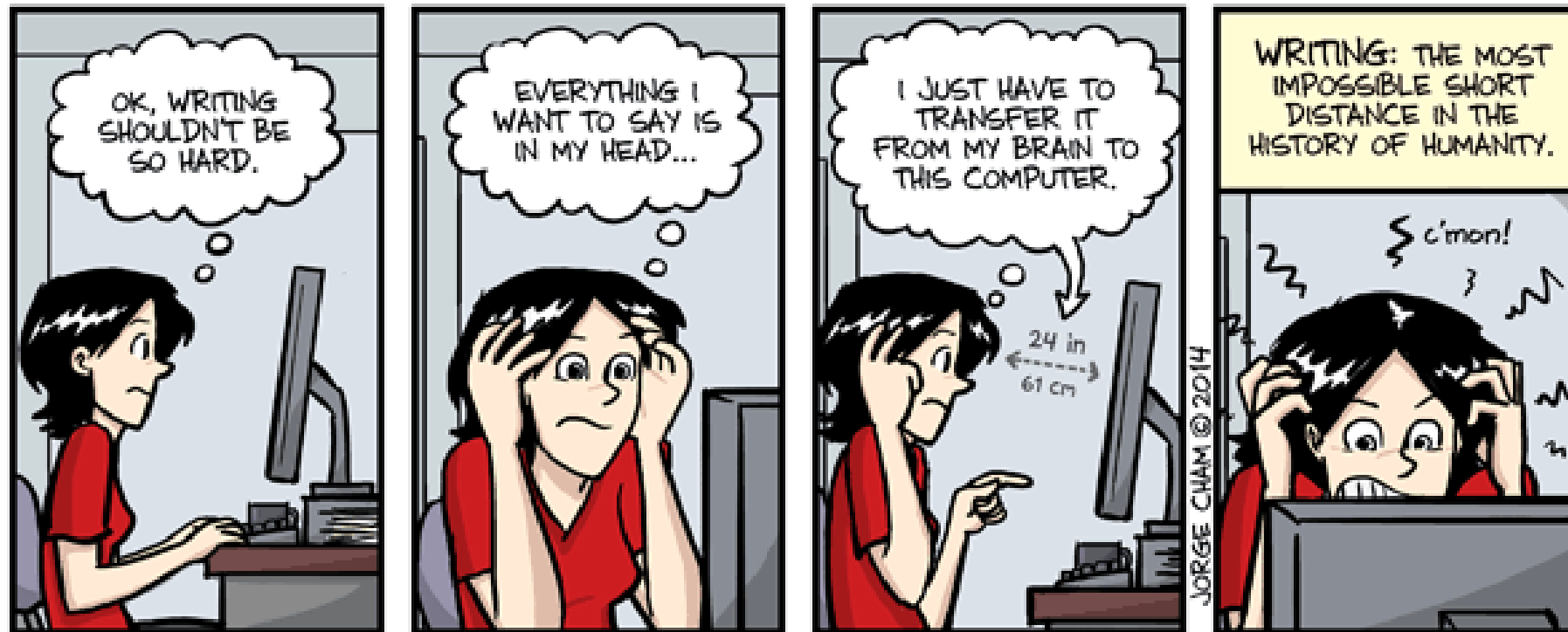


- ❑ The challenge is offering brainy ideas to address **urgent-important** and **relevant** issues
- ❑ Our approach to transform the offered ideas into research products should not be found in the literature (**novel-pioneering**)

Writing the grant



“A grant is about convincing a jury that our ideas are worthy and exciting. Unfortunately, science storytelling is not that easy”



WWW.PHDCOMICS.COM

Writing the grant



- ❑ Creating SMART (**S**pecific, **M**easurable, **A**chievable, **R**ealistic*, **T**ime-sensitive) objectives to effectively reach the goals
- ❑ Get feedback from colleagues (fresh perspectives and viewpoints)
 - Are the objectives feasible?
 - Am I the perfect candidate to complete them?

*Note: research that is over-ambitious and promises everything is usually rejected

Writing the grant



In short..

Goal

Objective

*“Find the **critical gap**, and fill it **effectively**”*



Writing the grant



- ❑ Apply KISS (**Keep It Simple and Smart**) principle in the grant writing
- ❑ Grasp attention from the reviewers and selection panel
- ❑ Polish, check, re-polish and re-check the draft to very clearly show the most important things to be offered

To get noticed by the selection panel

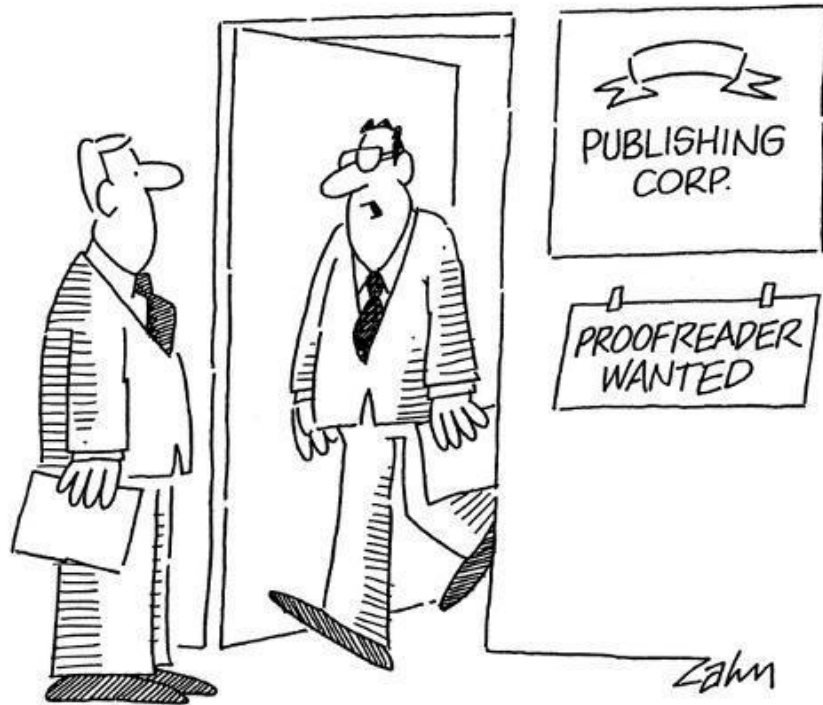


- An effective, relevant description of ourselves (topic-dependent)
- Publishing track record as proof (extremely advantageous)
- Some experiences on research communication/dialogue
- Great relevance to the issues facing our “home” *CV – Curriculum Vitae*
- Meet the funder’s specific missions/strategic goals
- Smooth storytelling with grammatically correct texts
- New insights obtained and big impacts potentially given
- Schemes/illustrations instead of sentences
- Collaborators with proven track-records
- Admitting a study’s limitations yet providing possible solutions

Science dialogue with students



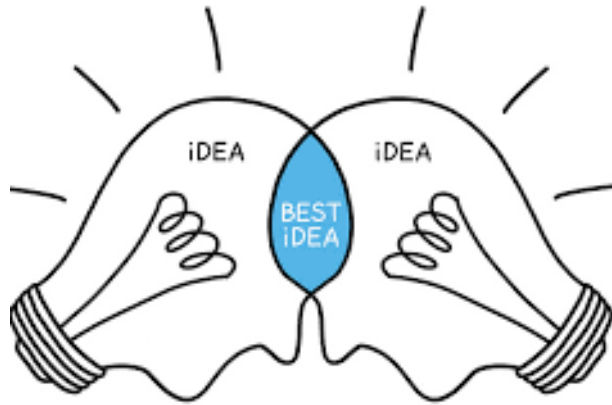
Writing the grant



"No luck — my résumé had three typos."

- ❑ Avoid the urge to put in too much; make sure that everything is there for a purpose
- ❑ **Proofread:** repeated typos can give the impression that our research is sloppy
- ❑ If no impressive track record, preliminary data become important

Collaborators



“Collaborative researches addressing urgent, important questions are favorites of reviewers and funding agencies”

Things to consider:

- Outside/external collaborations can be very advantageous
- Address mutual expectations
- Clearly divide and establish who's responsible for each task
- Determine authorship and communicate frequently
- Access to data and share responsibility for integrity in “research integrity”

Application process



- ❑ Read instructions very carefully; attention to detail
- ❑ No ridiculous mistakes, e.g., accidentally submitting an earlier draft full of **bolds**, **highlights** and peer's comments

Most funding agencies are flooded with high-quality applications, and small mistakes can be used as an excuse to reject our grant

Responding the reviews



- Always respond to every comments we got from the reviewers, even if space is limited
- Don't have to agree with everything, yet make sure that we don't appear to be ignoring any comments
- Negative feedback can be one of the best learning experiences

Content



- ❑ Securing funding
- ❑ Case studies - personal experiences
 - Funding for Postdoctoral Fellow (PDF)
 - Funding for Principal Investigator (PI)
 - Funding from private sector / company
 - Funding from international research center
 - Accessing national-level funding from other countries

Funding for Postdoctoral Fellow (PDF)



Marie Skłodowska-Curie Actions



<https://ec.europa.eu/research/mariecurieactions>

Japan Society for the Promotion of Science



<https://www.jsps.go.jp>

Humboldt Research Fellowships



<https://www.humboldt-foundation.de>

Banting Postdoctoral Fellowships



<https://banting.fellowships-bourses.gc.ca>

Swiss Excellence Postdoctoral Fellowships



<https://www.sbf.admin.ch>

JSPS Fellowship



Marie Skłodowska-Curie Actions

Selection rate: 10-18%



Japan Society for the Promotion of Science

Selection rate: 8-12%



Humboldt Research Fellowships

Selection rate: 15-20%



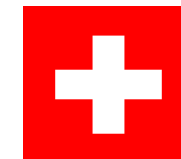
Banting Postdoctoral Fellowships

Selection rate: ~15%



Swiss Excellence Postdoctoral Fellowships

Selection rate: ~20%



JSPS Fellowship

must be “highly qualified”



JAPAN SOCIETY FOR THE PROMOTION OF SCIENCE
日本学術振興会

Text Size S M L

Search Site Map

一般の方へ

研究者/機関担当者の方へ

English

About Us

Programs

How To Find Us/Contact

TOP > Programs > International Fellowships for Research in Japan > Postdoctoral Fellowships for Research in Japan

JAPANESE

MENU

- International Fellowships for Research in Japan
- Top
- Program Outline
 - Summer Program
 - About the Program
 - Application Procedure
 - Program Guidelines for Successful Fellows
 - Comments and Past Programs
 - FAQ
 - Strategic Program
 - From the US
 - From Switzerland
 - From India
 - Program Guidelines for Successful Fellows
 - List of Fellows
 - FAQ
 - Short-term Program
 - About the Program
 - Application

JSPS Postdoctoral Fellowships for Research in Japan

To promote international scientific cooperation, the Japan Society for the Promotion of Science encourages **highly qualified** researchers from the world over to come to and conduct joint research activities with colleagues at Japanese universities and research institutes. JSPS offers five postdoctoral fellowship programs, each with different eligibility requirements.

- | | |
|--------------|--|
| Pre/Postdocs | <p>Summer Program
Young pre-/post-doctoral researchers from France, Germany, Sweden, the UK, Canada are invited to Japan over a period of two months during the summer to pursue research under the guidance of host researchers in universities and research institutions in Japan.</p> |
| Postdocs | <p>Strategic Program
Young and excellent pre-/post-doctoral researchers with high future potential from selected countries are strategically invited to Japan for the period of two to twelve months in order to build collaborative research relationships with Japanese colleagues.</p> <p>Short-term Program
To provide opportunities for pre-/post-doctoral researchers from the US, Canada and Europe to conduct, under the guidance of their hosts, cooperative research with leading research groups in universities and other Japanese institutions.</p> |

Content



- ❑ Securing international funding
- ❑ Case studies - personal experience
 - Funding for Postdoctoral Fellow (PDF)
 - **Funding for Principal Investigator (PI)**
 - Funding from private sector / company
 - Funding from international research center
 - Accessing national-level funding from other countries

FP7 Programme



The role of the partners

“An intimate collaboration between industry and academia”



Photocatalytic nanomaterial synthesis and multifunctional nanocomposite preparation

1



Study of processes of degradation of water and air pollutants and bacteria assisted by the novel photocatalytic nanomaterials

2



Technological application for enviromental depollution

3



MENU

- [Top](#)
- [How to apply](#)
- [KAKENHI pamphlet !\[\]\(1a4445434163fab3287e3787f757077d_img.jpg\)](#)
- [Handbook for Researchers !\[\]\(f3377005503d07a4db49e72f49d6c3ce_img.jpg\)](#)
- [Types of Grants Programs](#)
- [Budget](#)
- [Peer Review Process](#)
- [Award Trends](#)
- [Research Results Database & Archives](#)
- [KAKENHI ESSAY SERIES](#)
- [Results generated through the Grants-in-Aid for Scientific Research Program](#)
- [Frontline Scientific Research Projects Advanced in JAPAN](#)
- [System Reform Creating the Grant-in-Aid Fund !\[\]\(6f451882104667d91802b125d906db3b_img.jpg\)](#)
- [Inquiries](#)

Grants-in-Aid for Scientific Research

科研費
KAKENHI

<KAKENHI>

Outline of Grants-in-Aid for Scientific Research <KAKENHI>

Grants-in-Aid for Scientific Research are competitive funds that are intended to significantly develop all scientific research (research based on the free ideas of the researcher), from basic to applied research in all fields, ranging from the humanities and the social sciences to the natural sciences. The grants provide financial support for creative and pioneering research projects that will become the foundation of social development. The research projects are selected using a peer-review screening process (screening by multiple researchers whose field of specialization is close to that of the applicant).

Research results obtained under these Grants-in-Aid are widely published in academic journals.

From FY1999, some functions of the Grants-in-Aid program were transferred to JSPS from Monbusho (now Monbu Kagakusho [Ministry of Education, Culture, Sports, Science and Technology (MEXT)]).

KAKENHI



Japan Society for the Promotion of Science (JSPS)
5-3-1 Kojimachi, Chiyoda-ku,
Tokyo 102-0083, JAPAN
[More](#)



Grant-in-Aid for Transformative Research Areas	<p>efforts for joint research and shared use of equipment, etc. (5 years; more than 50 million yen and up to 300 million yen per fiscal year per research area (In a truly necessary case, a budget exceeding 300 million yen may be requested.))</p> <p>(B) Research areas proposed by compact groups of researchers who will be bearers of the next generation of research with a smaller budget scale (about 3 or 4 groups), which aim to create research areas that will lead the way to radical transformation of and change in the existing framework and/or direction of research as well as upgrade and level-up of scientific research in Japan through more challenging and exploratory research, and expected to lead to the Transformative Research Areas (A) in the future. (3 years; 50 million yen or less per fiscal year per research area)</p>	SG
Grant-in-Aid for Scientific Research	(S): Creative/pioneering research conducted by one or a relatively small number of researchers. 5 years (in principle) 50 million to 200 million yen	(S) SG
	(A), (B), (C): Creative/pioneering research conducted by one researcher or jointly by multiple researchers.	(A) SG
	(A) 3 to 5 years 20 million to 50 million yen	(B) SG
	(B) 3 to 5 years 5 million to 20 million yen (C) 3 to 5 years 5 million yen or less	(C) MF
Grant-in-Aid for Challenging Research (Pioneering)/(Exploratory)	<p>Research conducted by a single or multiple researchers that aims at radically transforming the existing research framework and/or changing the research direction and has a potential of rapid development.</p> <p>The scope of the (Exploratory) category encompasses research proposals that are highly exploratory and/or are in their budding stages.</p> <p>(Pioneering) 3 to 6 years 5 million to 20 million yen (Exploratory) 2 to 3 years 5 million yen or less</p>	MF
Grant-in-Aid for Early-Career Scientists	<p>Research conducted by an individual researcher (*2) who is less than 8 years after Ph.D. acquisition.</p> <p>2 to 5 years 5 million yen per project.</p>	MF
Grant-in-Aid for Research Activity Start-up	<p>Research conducted by a single researcher who has been freshly appointed to a research position, or who has returned from his/her maternity, childcare or other kinds of leave.</p> <p>Up to 2 years Up to 1.5 million per fiscal year</p>	MF
Grant-in-Aid for Encouragement of	<p>Research conducted by an individual who is ineligible for application for other KAKENHI categories (e.g. Individuals who belong to educational or research institutions, private companies, etc. and engage in the</p>	SG

Content



- ❑ Securing international funding
- ❑ Case studies - personal experience
 - Funding for Postdoctoral Fellow (PDF)
 - Funding for Principal Investigator (PI)
 - **Funding from private sector / company**
 - Funding from international research center
 - Accessing national-level funding from other countries

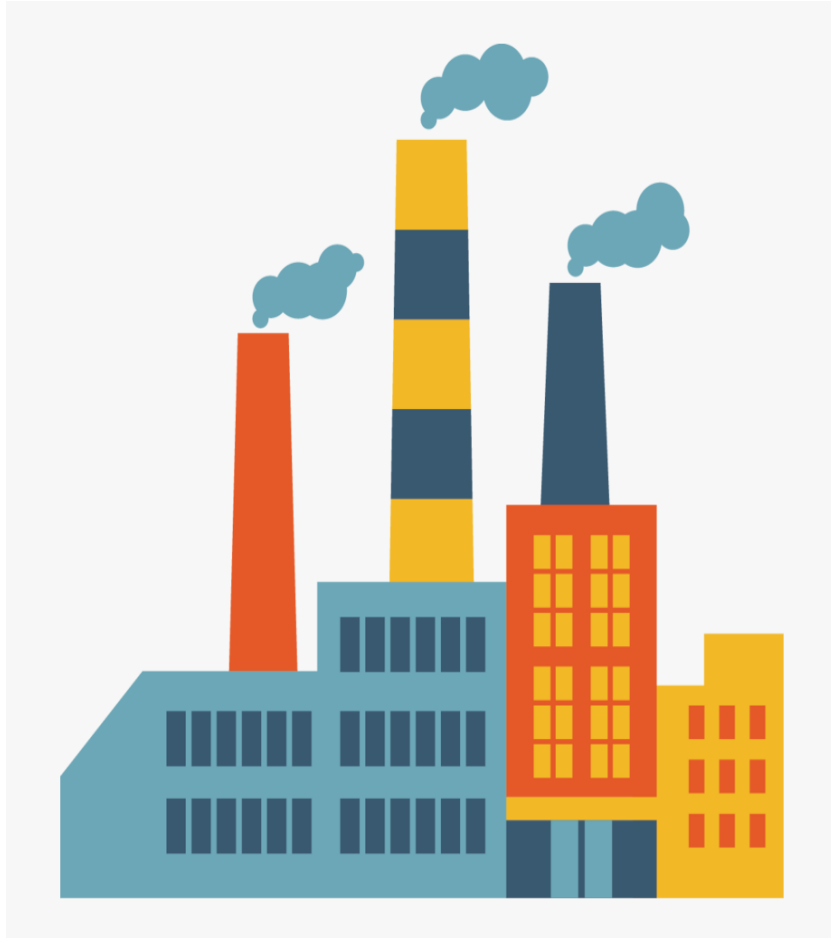
Funding from private sector



- ❑ **Problem**: Government funding is increasingly hard to secure, leaving academic scientists to cut back on their research or find creative new sources of money

- ❑ **Opportunity**: Private sector has dramatically reduced its fundamental research activity, but remains willing to pay for academic expertise

Funding from private sector



- Make the right approach
- Decide what type of collaboration is best for us
- Offer help in the company's missions/priorities
- Agree publication rights upfront

Content



- ❑ Securing international funding
- ❑ Case studies - personal experiences
 - Funding for Postdoctoral Fellow (PDF)
 - Funding for Principal Investigator (PI)
 - Funding from private sector / company
 - **Funding from international research center**
 - Accessing national-level funding from other countries

Funding from intl. research center



International Research Center

Your Research Edge

Do you have required facilities to perform impactful researches?

If not, propose an excellent research topic and perform it in international research centers, essentially **at no cost**

Funding from intl. research center



International Research Center

Your Research Edge

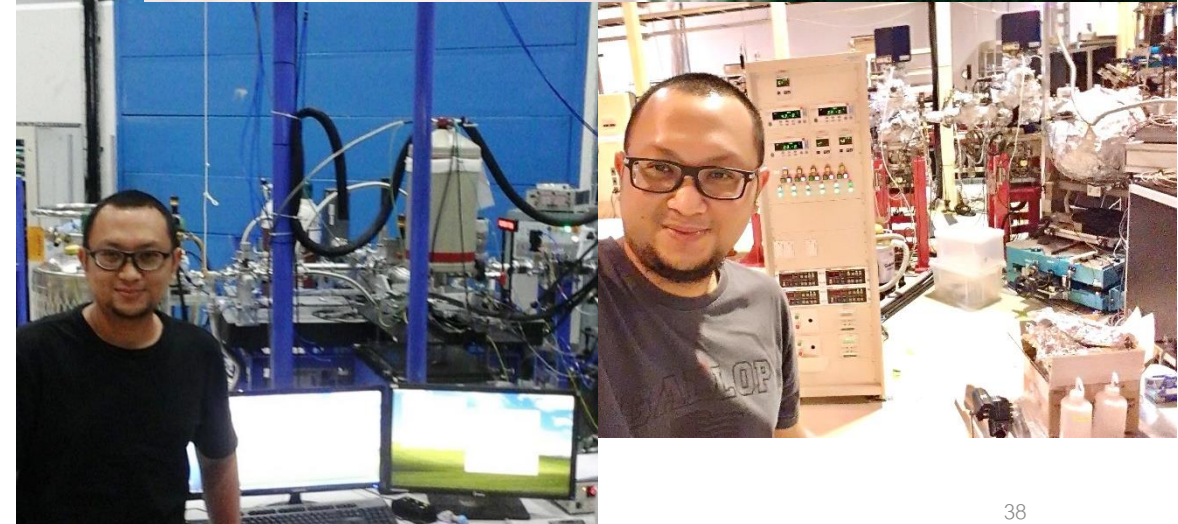
- “Asking” for money and “borrowing” Lab facilities
- Publishing track record is very favorable, but not prerequisite
- Publishing the results in good journals is a must, otherwise we must pay large sum of money

Funding from intl. research center



Photon Factory

Institute of Materials Structure Science
High Energy Accelerator Research Organization, KEK



Funding from intl. research center



Photon Factory

Institute of Materials Structure Science
High Energy Accelerator Research Organization, KEK

[PF-HOME](#)

[About PF](#) ▾

[Sciences](#) ▾

[For Users](#) ▾

[Beamlines](#) ▾

[Research Group](#) ▾

[Japanese](#)

[PF-HOME](#) / [For Users](#) / [Call for proposal](#)

Call for Proposals

Photon Factory welcomes an application of research proposals **from all over the world**. The due dates of the proposal submission are set twice (November) except for U, P and S1 categories.

Categories	Status	Deadline for submission
G (General), S2 (Special-2)	Closed	May 15th(Fri) 13:00 (in Japanese Standard Time)
T (Ph.D.student)	Closed	May 15th(Fri) 13:00 (in Japanese Standard Time)
U (Urgent & Important), P (Preliminary), S1 (Special-1)	Opened	no due date (accepting at any time)

Funding from intl. research center



Hokkaido University
Institute for Catalysis



[Access](#) | [Site map](#) | [Contact us](#) [Japanese](#)

Home

Outline

Activity


Recruitment

Joint Usage/
Research Center

Achievement

Application

2020 Joint Usage/Research Program Application Guidelines Institute for Catalysis, Hokkaido University

- ▶ [Application guidelines PDF file](#) 
- ▶ [Application forms](#)

Since April 2010, Catalysis Research Center (CRC), the predecessor of Institute for Catalysis (ICAT), has been authorized as the Joint Usage/Research Center in catalytic chemistry. The institute has been conducting joint researches with nationwide researchers and has produced many fruitful achievements concerning catalytic chemistry. When CRC was reorganized into ICAT, Catalysis Collaborative Research Center was established in addition to the Department of Fundamental Research, Department of Practical Applications and Department of Target Research, in order to build a new catalytic science by stepping over the conventional framework of catalytic chemistry. Through collaboration with different fields such as physics, materials science, life science, mathematics, information science, chemical engineering, etc., we pursue collaborative researches on catalytic science and aim at forming an international network of catalyst research.

In 2020, we open application to the Joint Usage/Research Program on sustainable catalysts aimed at building new energy, resources and material systems, creation of new academic fields based on catalysts, improvement of catalyst function and support for multidimensional analysis of catalyst. Please follow the instruction below to submit your application.

Funding from intl. research center



東京理科大学 総合研究機構
光触媒国際研究センター
Tokyo University of Science Photocatalysis International Research Center

日本語 >>

HOME

News & Events

Director's Message

About PIRC

Activities

People

Map/Directions

🏠 > [News & Events](#) > Application Guide for Collaborative Research in 2020

News & Events

Application Guide for Collaborative Research in 2020

The Joint Usage/Research Center at the Photocatalysis International Research Center (PIRC) started in 2015 under a program by Japan's Ministry of Education, Culture, Sports, Science and Technology (MEXT). The purpose is to open photocatalysis facilities, to collaborate with PIRC researchers, and to provide encouragement to the world of photocatalysis.

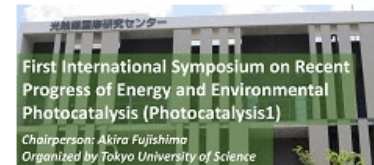
The tremendous amount of research that has been carried out in two closely related fields, semiconductor photoelectrochemistry and photocatalysis, during the past thirty years continues to provide fundamental insights and practical applications. The principles and measurements obtained with regard to TiO_2 in photoelectrochemical studies have led to research on heterogeneous photocatalysis, with regard to which the powerful photooxidative activity of TiO_2 has been applied in environmental clean-ups.

Through collaborative research in the Joint Usage/Research Center program, we expect to find breakthroughs leading to the next generation photocatalysis and to promote both fundamental and applied photocatalysis research.

RIST TUS
Research Institute for Science & Technology

研究戦略・産学連携センター

 **東京理科大学**
TOKYO UNIVERSITY OF SCIENCE



Funding from intl. research center



→ Site map

→ JAPANESE

Change Text Size

S

M

L

Google Custom Search

Search

Home

Welcome

Organization

Access map

[Home](#) > [Joint Usage/Research Program](#)

All screen Print

Text print

Joint Usage/Research Center for Intractable Diseases

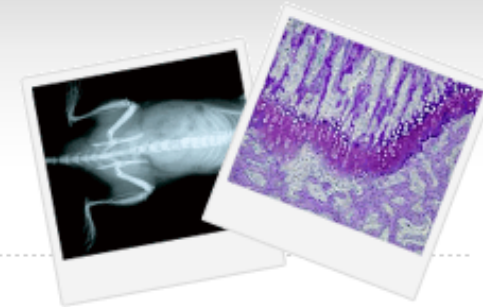
→ Guidelines for International
Joint Research Project FY2020
Medical Research Institute,
Tokyo Medical and Dental
University

→ Guidelines for International
Joint Research Project FY2019
Medical Research Institute,
Tokyo Medical and Dental
University

→ Guidelines for International
Joint Research Project FY2018
Medical Research Institute,
Tokyo Medical and Dental
University

Joint Usage/Research Center for Intractable Diseases

Medical Research Institute Tokyo Medical and Dental University



Since June 2009, The Medical Research Institute (MRI) of Tokyo Medical and Dental University (TMDU) has been recognized as the Joint Usage/Research Program by the Japanese Ministry of Education, Culture, Sports, Science and Technology.

From April 2010, the MRI has been functioning as a Joint Usage/Research Center for Intractable Diseases with the help of researchers of the medical science society, to tackle the pathogenesis of intractable diseases and further develops measures to diagnose and treat patients.

To further develop the Joint Usage/Research Program, we provide the opportunity for researchers worldwide to

Funding from intl. research center



[AccessMap](#) [Contact](#) [Sitemap](#) [Links](#) [Japanese](#)



[Home](#) [About](#) [TSUBAME](#) [Organization](#) [Publications](#) [Archive](#) [Event](#)

学際情報基盤拠点・HPCI

- ▶ [JHPCN, Joint Usage/Research Center for Interdisciplinary Large-scale Information Infrastructures](#)
- ▶ JHPCN: Application examples for very large-scale data processing and very large capacity network technology

Urgent Info

There is no Urgent Info now.

[HOME](#) » [学際情報基盤拠点・HPCI](#) » JHPCN, Joint Usage/Research Center for Interdisciplinary Large-scale Information Infrastructures

JHPCN, Joint Usage/Research Center for Interdisciplinary Large-scale Information Infrastructures

▶ [Japanese of this page](#)

GSIC of the Tokyo Institute of Technology becomes the Joint Usage/Research Center

The Joint Usage/Research Center for Interdisciplinary Large-scale Information Infrastructures is made up of eight centers equipped with supercomputers, and GSIC of the Tokyo Institute of Technology is one of these centers. This is a network-type joint usage and collaborative research center, and its core institution is the Information Technology Center of the University of Tokyo. The Center began as a program of the Japanese Ministry of Education, Culture, Sports, Science & Technology (MEXT) in April 2010.

The formal title of this program is "Joint Usage/Research Center for Interdisciplinary Large-scale Information Infrastructures," but it is also known as "Japan High Performance Computing and Networking plus Large-scale Data Analyzing and Information Systems (JHPCN)". This alternative name indicates that research here is carried out in four areas:

Content



- ❑ Securing international funding
- ❑ Case studies - personal experiences
 - Funding for Postdoctoral Fellow (PDF)
 - Funding for Principal Investigator (PI)
 - Funding from private sector / company
 - Funding from international research center
 - **Accessing national-level funding from other countries**

Funding from other countries



- Strong relationship (collaboration) to get trust is the key
- Borrow collaborator's name to sell "our brain"/ideas
- We propose the ideas, prepare the proposal, and formally act as "collaborator" (co-PI) of our collaborator (PI)
- Our collaborator provides resources (grad. students, postdocs, Lab., etc.) to execute the funded project
- We can be the first author, the corresponding author, or both, for the published work, depending on the agreement

Funding from other countries



Thailand

via Thammasat University



Netherlands
via TU-Eindhoven



Vietnam
via Ton Duc Thang University



Japan
via Kobe University

Last but not least



Be creative: some unconventional sources of funding remain available

Never give up: grants with low scores can even end up funded

Comments and questions are welcome